



KEY FEATURES

- Available with 30° (narrow) or 100° (wide) symmetric optics
- Hazardous location available
- Thermally managed for maximum longevity
- Adjustable mounting bracket
- Operation and environmental benefits of LED technology
- Robust construction suitable for outdoor applications



MODEL NUMBER SELECTOR

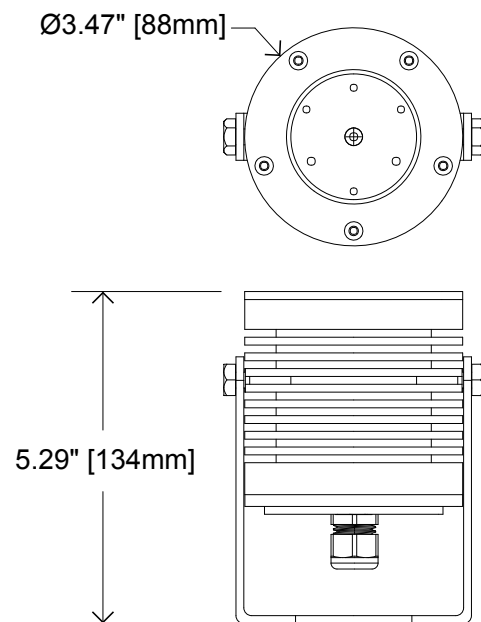
Example: CANLED-CW-W-ALU-GEN

MODEL	COLOUR	OPTIC	FINISH	LOCATION
CANLED				GEN
	CW - Cool White NW - Neutral White WW - Warm White CUS - Custom <i>Contact for custom colour</i>	N -Narrow W -Wide NF -Narrow Frosted WF -Wide Frosted	ALU -Aluminium CUS -Custom <i>See pg2 for custom finishes</i>	GEN - General <i>C1D2 Available for Haradous Locations See CANLED-C1D2</i>

TECHNICAL SPECIFICATIONS / MAXIMUM RATINGS

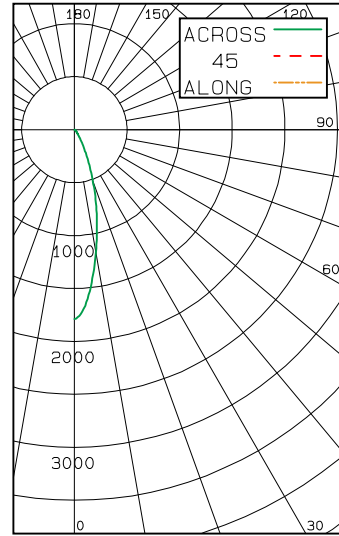
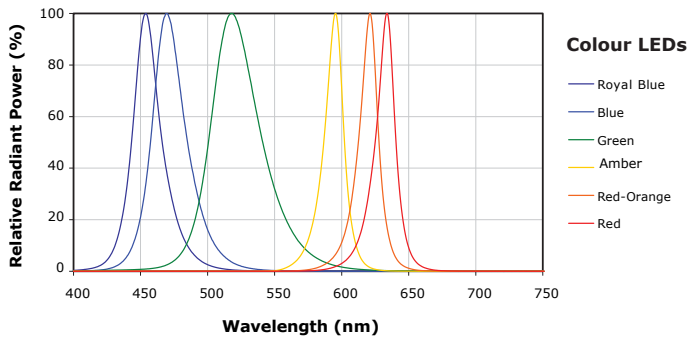
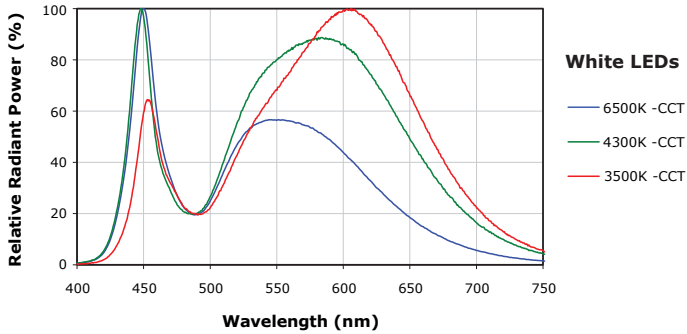
HOUSING	Aluminum
MOUNTING	Aluminum Yoke
VOLTAGE MAXIMUM	28 VDC
TYPICAL INPUT VOLTAGE	12-24 VDC
POWER	7.9 W @ 12 VDC 8.4 W @ 24 VDC
CURRENT	0.66 A @12 VDC 0.35 A @ 24 VDC
CONNECTIONS	6Ft Flying Lead (Custom Lengths Available)
TEMPERATURE RANGE	-40° C to +85° C
TYPICAL CASE TEMPERATURE	~15° C Above Ambient Temperature
CERTIFICATIONS	Certified To CSA 22.2 No. 250.0, Conforms To UL 1598
INGRESS PROTECTION	IP66
COLOUR TEMP RANGE	CW: 6500K NW: 4300K WW: 3500K
CRI VALUE	CW: 75 NW: 75 WW: 80
TOTAL LUMENS	CW-W: 459 C W-N: 587
LUMEN MAINTENANCE	LM-80 > 60,500 hrs (Based on CREE long term testing)
WEIGHT	2.3 lb 1.04 kg

DIMENSIONS

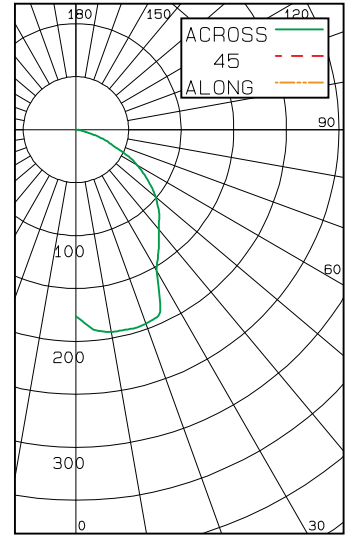


* The ambient temperature during lifetime, lumen and chromaticity determination is 25° C ± 1° C

PHOTOMETRICS



NARROW BEAM
(Clear Lens)

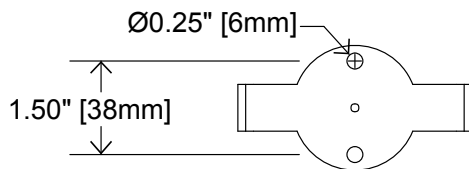


WIDE BEAM
(Clear Lens)



MOUNTING OPTIONS

MOUNTING BRACKET



OPTIC OPTIONS

NARROW BEAM



WIDE BEAM



FROSTED LENS



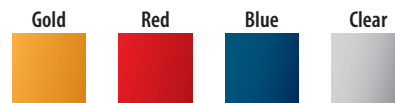
CUSTOM OPTIONS

WIRING

Other wire lengths available in 1 foot increments.

CUSTOM FINISHES

Anodized Aluminum



Please contact for further options

Powder Coated Aluminum



Please contact for further options